

# Highway 1416 Sanitary Sewer – Construction Update

12/04/2025

Project Summary: Upsize the sanitary sewer line from about Cottonwood Ave to West Gate Rd in the Highway 1416 median to support the growth of Box Elder

Contractor: H&W Contracting, LLC, Sioux Falls, SD  
John Rennich, 605.339.8834

Engineer: KLJ Engineering, Rapid City, SD  
Tim Hartmann, 605.872.5004

Important Note: Motorists are reminded to carefully monitor their speed through the construction zone and remain aware of construction activities and changing weather.

December 8<sup>th</sup> to December 13<sup>th</sup>:

- Important Note – Westside Drive and Highway 1416 crossover will be closed Monday, December 8<sup>th</sup> to Tuesday, December 9<sup>th</sup> for asphalt paving.
  - A detour will not be established for this closure. Any vehicles needing use of this detour should proceed to the next available crossover.
  - The crossover closure will not affect passerby traffic on Highway 1416.
- Work also continues in the Highway 1416 median, west of the Westside Drive crossing.
- Work will include activities next to Highway 1416, but all lanes will remain open.

December 15<sup>th</sup> to December 20<sup>th</sup>:

- Important note: The intermediate Box Elder Road Access Crossover as shown in the picture below will tentatively be closed beginning Monday, December 15<sup>th</sup> for a duration of approximately 10 days.
  - A detour will not be established for this closure. Any vehicles needing use of this detour should proceed to the next available crossover.
  - This crossover closure will not affect passerby traffic on Highway 1416.
- Work also continues in the Highway 1416 median, east of West Gate Road.

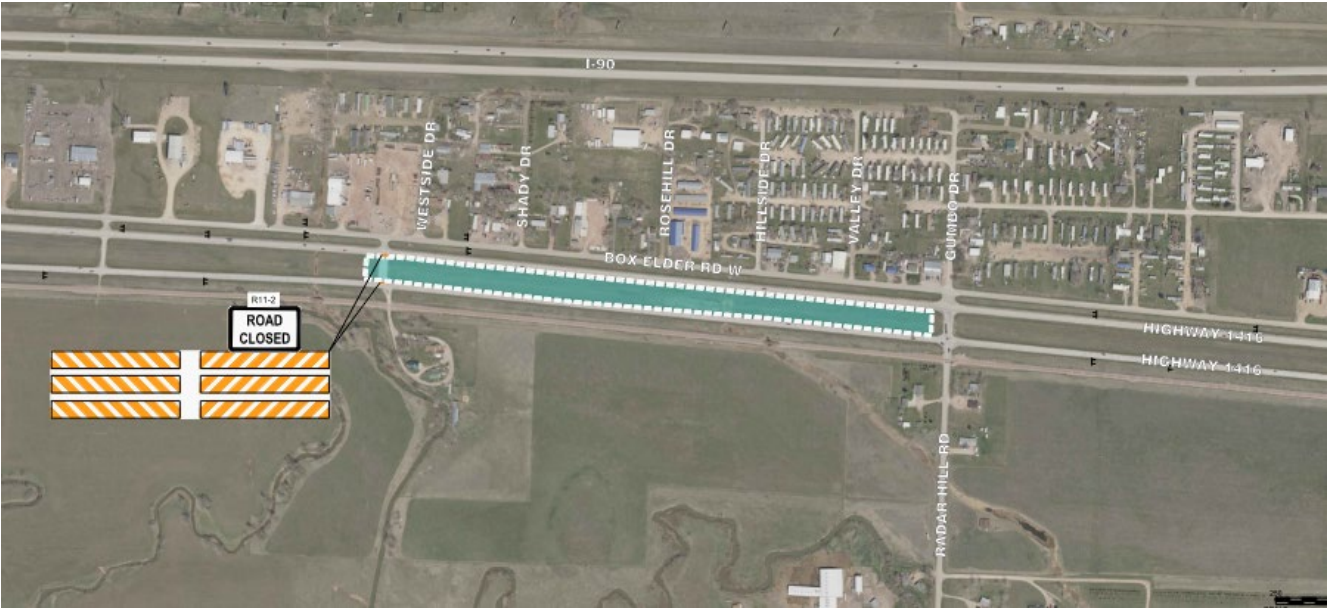
---

Work Area – November 8<sup>th</sup> to December 20<sup>th</sup>:



Work Areas –

December 8<sup>th</sup> & 9<sup>th</sup>



December 15<sup>th</sup> to December 20<sup>th</sup>:

